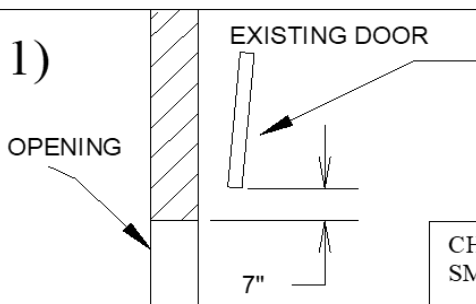


SECURITY DOOR 2" SWITCH TRACK HIGH LIFT

1)



1.1) If you want the security door to come down parallel with opening then readjust existing door so that in the full up position the bottom will be a minimum of 7 inches above the top of the opening.

1.2) This may also require you to readjust spring stop bumpers or travel on motor operated door. If necessary cut 7 inches off existing cable and add turns to the existing springs.

CHECK AND REPAIR THE EXISTING DOOR AND TRACK FOR PROPER AND SMOOTH OPERATION. REPLACE EXISTING VERTICAL TRACK IF REQUIRED.

2)

2.1) Measure down 10" from top of opening and cut track.

2.2) Measure up 4-1/2" and cut track off.

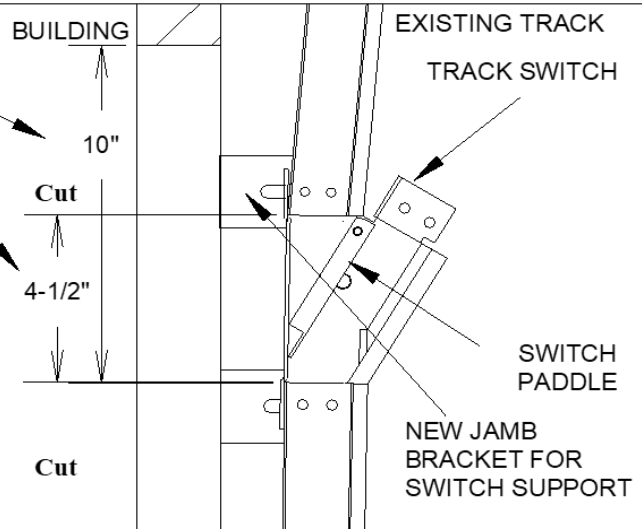
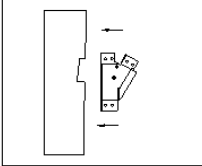
2.3) **Jamb bracket mounted** - Reuse or remove brackets in the way and install track switch with 1/4" track bolts. Install 2 new jamb brackets to wall and switch using flange nuts.

2.4) **Angle mounted** - Notch out angle for switch. Install track switch with 1/4" track bolts and nylon stop lock nuts provided.

2.5) Check paddle for crisp action.

2.6) To promote smooth roller action through the switch some bending of the track ends may be needed so that curved part of track matches up with switch paddle.

Angle Mount



3)

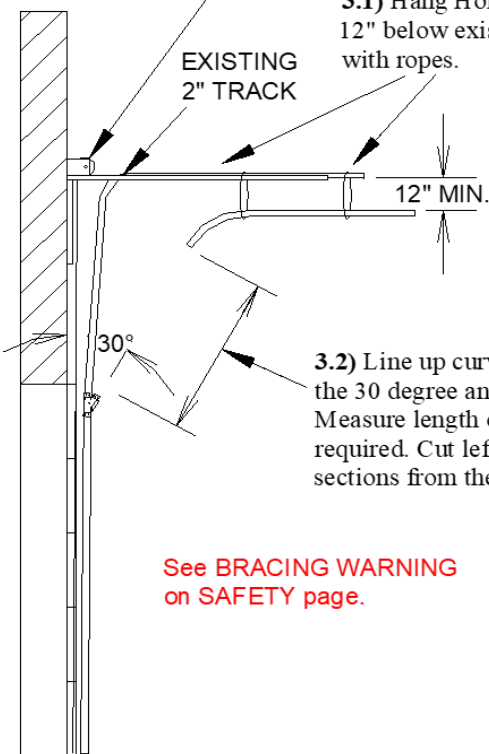
EXISTING TORSION BAR AND SPRINGS

EXISTING 2" TRACK

3.1) Hang Horizontal track 12" below existing track with ropes.

3.2) Line up curved end to match the 30 degree angle from switch. Measure length of high lift track required. Cut left and right sections from the track provided.

See BRACING WARNING on SAFETY page.



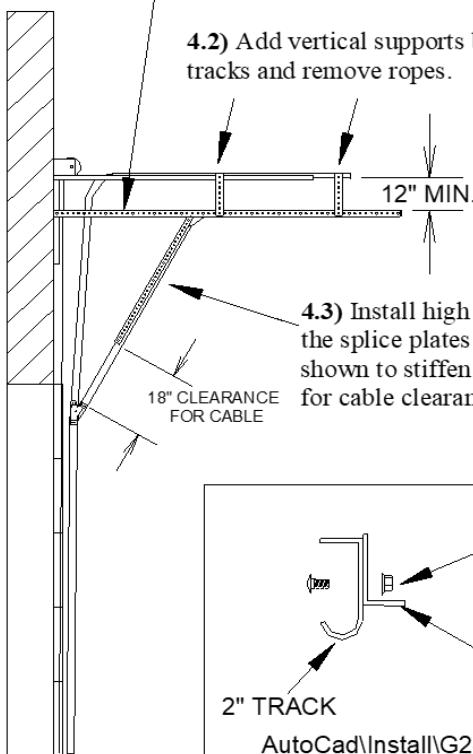
4)

Make sure tracks are properly braced and evenly spaced - parallel and perpendicular.

4.1) Install angle from wall back, to brace horizontal track.

4.2) Add vertical supports between tracks and remove ropes.

4.3) Install high lift section with the splice plates and add angle as shown to stiffen track. Leave 18" for cable clearance.



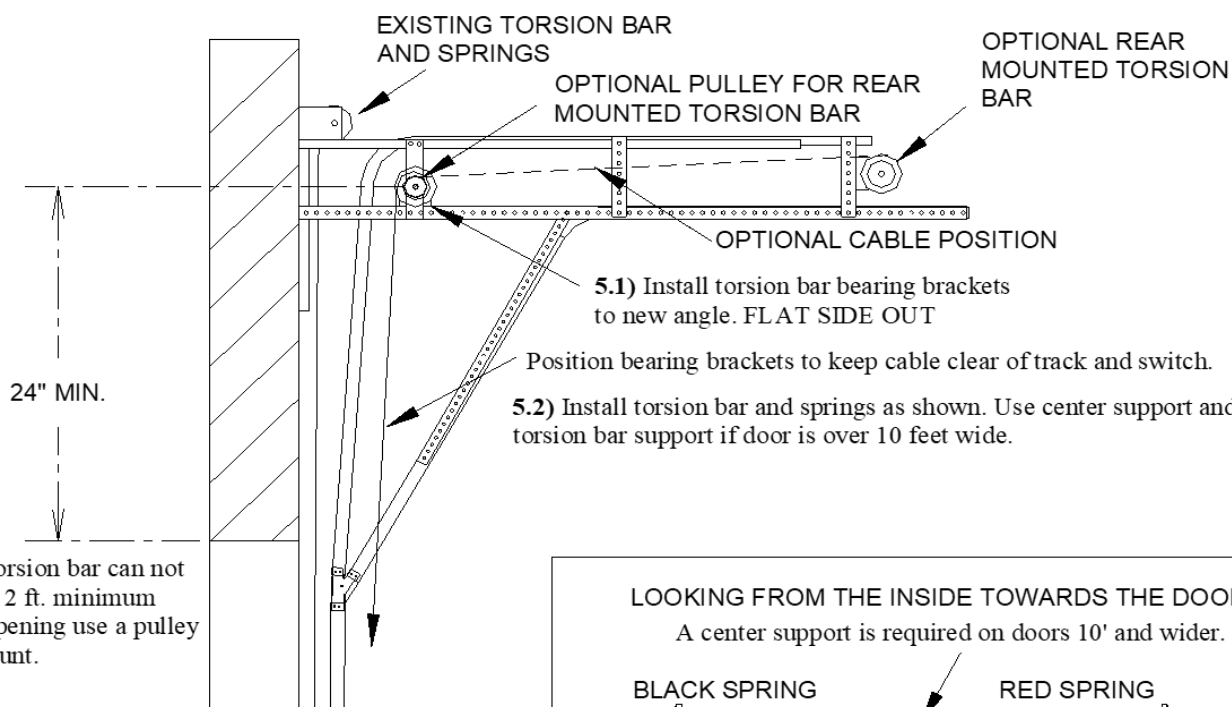
1/4" TRACK BOLT & NUT EVERY 18 INCHES

PUNCHED ANGLE

2" TRACK

AutoCad\Install\G2SW-H\p.1 rev 1

5)



If the new torsion bar can not be mounted 2 ft. minimum above the opening use a pulley and rear mount.

5.1) Install torsion bar bearing brackets to new angle. FLAT SIDE OUT

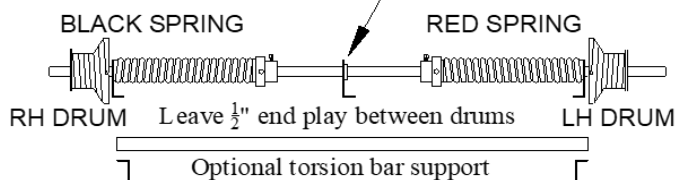
Position bearing brackets to keep cable clear of track and switch.

5.2) Install torsion bar and springs as shown. Use center support and torsion bar support if door is over 10 feet wide.

5.3) Install drums on shaft as shown. Leave $\frac{1}{4}$ " end play to prevent binding. New cable off front of drum.

LOOKING FROM THE INSIDE TOWARDS THE DOOR

A center support is required on doors 10' and wider.



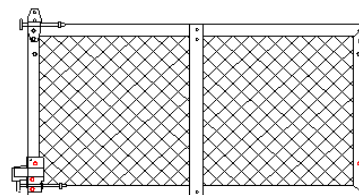
6)

6.1) Re-using the 2 self drillers mount left hinge (numbers down) with roller on the top of the bottom section left side only. Re-using the 3 red self drillers mount left bottom bracket with roller on the bottom section left side only. Secure all shaft collars within 1 inch of the end of the stem of the roller except the 2 top rollers.



See **BOTTOM BRACKET INSTALLATION** on **SAFETY** page

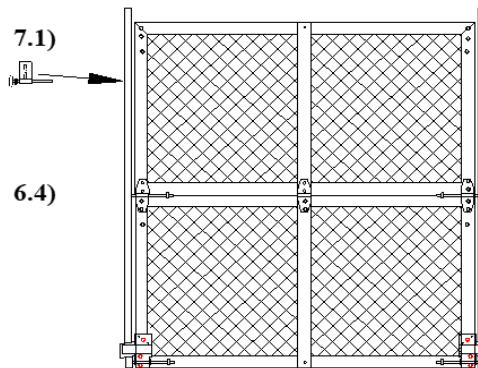
6.1)



6.2) Install section into track.

6.3) Re-using the 2 self drillers mount right hinge (numbers down) with roller on the bottom section right side. Re-using the 3 red self drillers mount right bottom bracket with roller on the bottom section right side. Using 1/4-20 self drillers mount center hinge (numbers down).

7.1)



6.4) If only 2 sections then lift next section up, install hinges and hold steady. Otherwise, re-using the 2 self drillers mount left hinge (numbers down) with roller on the top of the next section. Lift up onto previous section. Hold it steady while all the 6 hinges (8 hinges for wider doors) are fully installed. Use 1/4-20 self drillers for all center hinges. Repeat this step until all sections are in and hold top section in place.

7)

7.1) Install the top carrier with $\frac{1}{4}$ "-20 self-drillers. Use the long stem rollers with collars on inside.

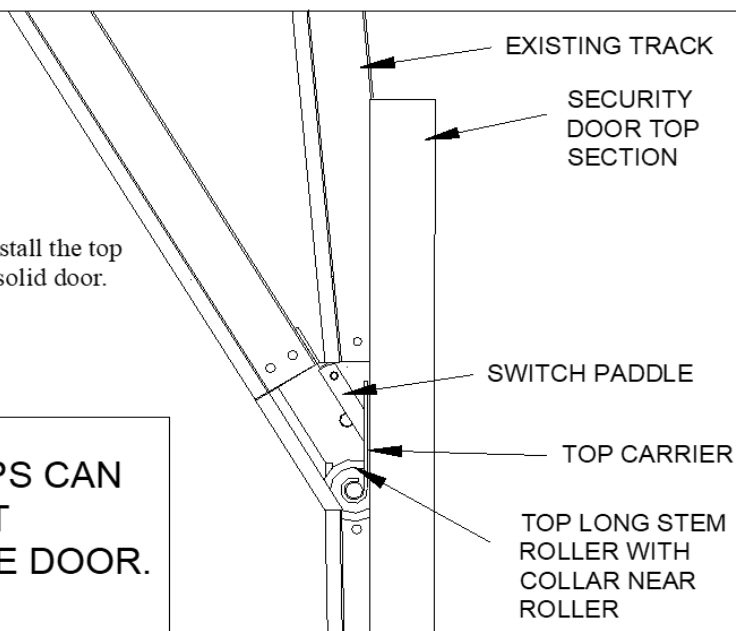
7.2) If you did 1.1 and 1.2 then position and install the top carriers so that the roller is at the bottom of the switch paddle.

7.3) If you did not do 1.1 and 1.2 then position and install the top carriers so that the top section leans back and misses solid door.



See TOP CARRIERS
WARNING on SAFETY page

**FAILURE TO FOLLOW THESE STEPS CAN
RESULT IN ROLLERS COMING OUT
BECAUSE OF BACK BREAKING THE DOOR.**



8)

8.1) Measure the distance from the torsion shaft to the floor and calculate the cable length as follows:
(For a rear mounted torsion the distance is measured from the floor around the pulley to the torsion bar.)

DRUMS:

OMI 54 HL-LD ($5\frac{7}{8}$ " Dia.) Floor to shaft plus 63" minus cable lift.

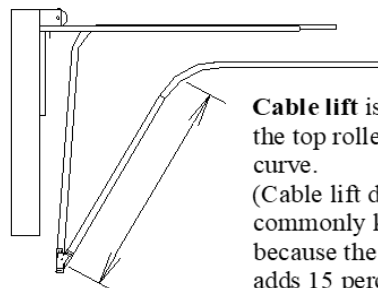
OMI 54 HL ($7\frac{3}{16}$ " Dia.) Floor to shaft plus 66" minus cable lift.

OMI 120 HL ($9\frac{3}{16}$ " Dia.) Floor to shaft plus 134" minus cable lift.

OMI 164 HL (11" Dia.) Floor to shaft plus 181" minus cable lift.

8.2) Carefully measure the cables and flatten stops into position.

8.3) Cut off excess cable.



Cable lift is the distance from the top roller to the top of the curve.

(Cable lift differs from what is commonly known as high lift because the 30 degree angle adds 15 percent more length.)

9)

9.1) Install down lock and handle with self-drillers. Lock door.

**See SPRINGS WARNING
on SAFETY page.**



9.2) Install cables behind drums and wind springs as specified on the front cover. Tension one spring with 2 winds, then go to other and wind fully. Stretch the spring out the width of 2 coils then tighten set screws. Go back to the first spring, wind fully and stretch then tighten set screws. (Add or subtract turns as necessary to give positive door operation.)

9.3) Install stop springs to stop door above top of opening.

9.4) Move pull rope on existing door in toward center 4 to 6 inches. (This keeps it from being trapped in the track switch.)

9.5) Install pull rope on the security door.

9.6) Check that the door sits level with no interference while moving up. (Readjust drum position if necessary to level door.)

9.7) Check that the door does not rub on the door frame in the down position.
(Readjust track as necessary to provide clearance.)

9.8) **RE-CHECK ALL HINGE BOLTS AND FASTENERS FOR TIGHTNESS.**

**See BUMPER SPRINGS
WARNING on SAFETY page.**



Door may come out of track if bumper spring is not installed.